

# CHRONOTECH

## ELECTRONIC STOPWATCH

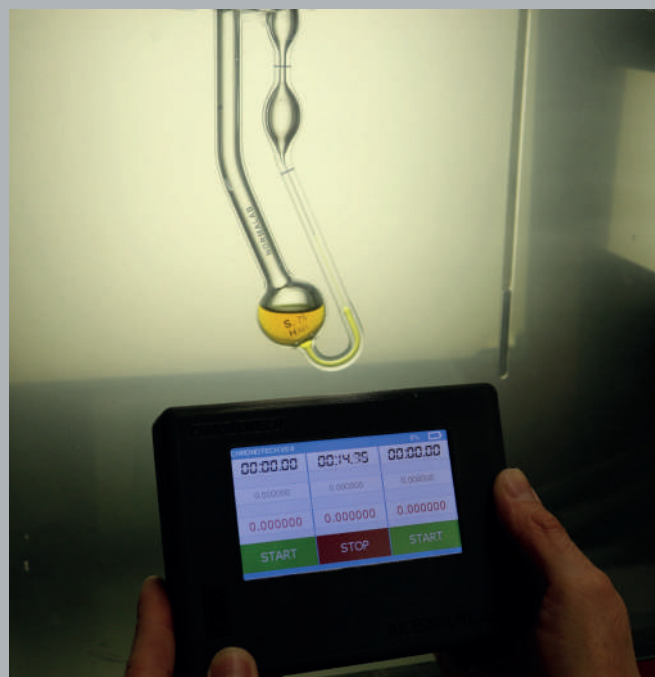


### SPECIFICATIONS

The CHRONOTECH is a software based stopwatch. It allows automatic calculation of kinematic viscosity by entering tube constant. Mobile and easy to handle, three different measurements can be done simultaneously with the CHRONOTECH.

## KEY FEATURES

- Mobile
- Easy to use (position markers)
- 3 simultaneous tests
- Touch screen interface
- 3 to 4 hours of autonomy
- Battery indicator
- LIPO battery (Lithium Ion Polymer)



## ORDERING INFORMATION

### NORMALAB production - CHRONOTECH

41900

#### Scope of delivery:

The CHRONOTECH tester includes :

- 1 power source
- 1 dock
- 1 power adaptor

#### Site requirements:

- Power supply: 100-240 V - 50/60 Hz - 1 A
- Dimension: (W) 150 x (D) 45 x (H) 115 mm
- Weight: 500 g

 **NORMALAB**  
www.normalab.com

**CONTACT : [sales@normalab.com](mailto:sales@normalab.com)**

Normalab FRANCE SAS  
ZA Caux Multipôles 1 - 76190 Valliquerville  
Tel. : +33 232.700.100  
Fax : +33 232.704.732

DISTRIBUTED BY